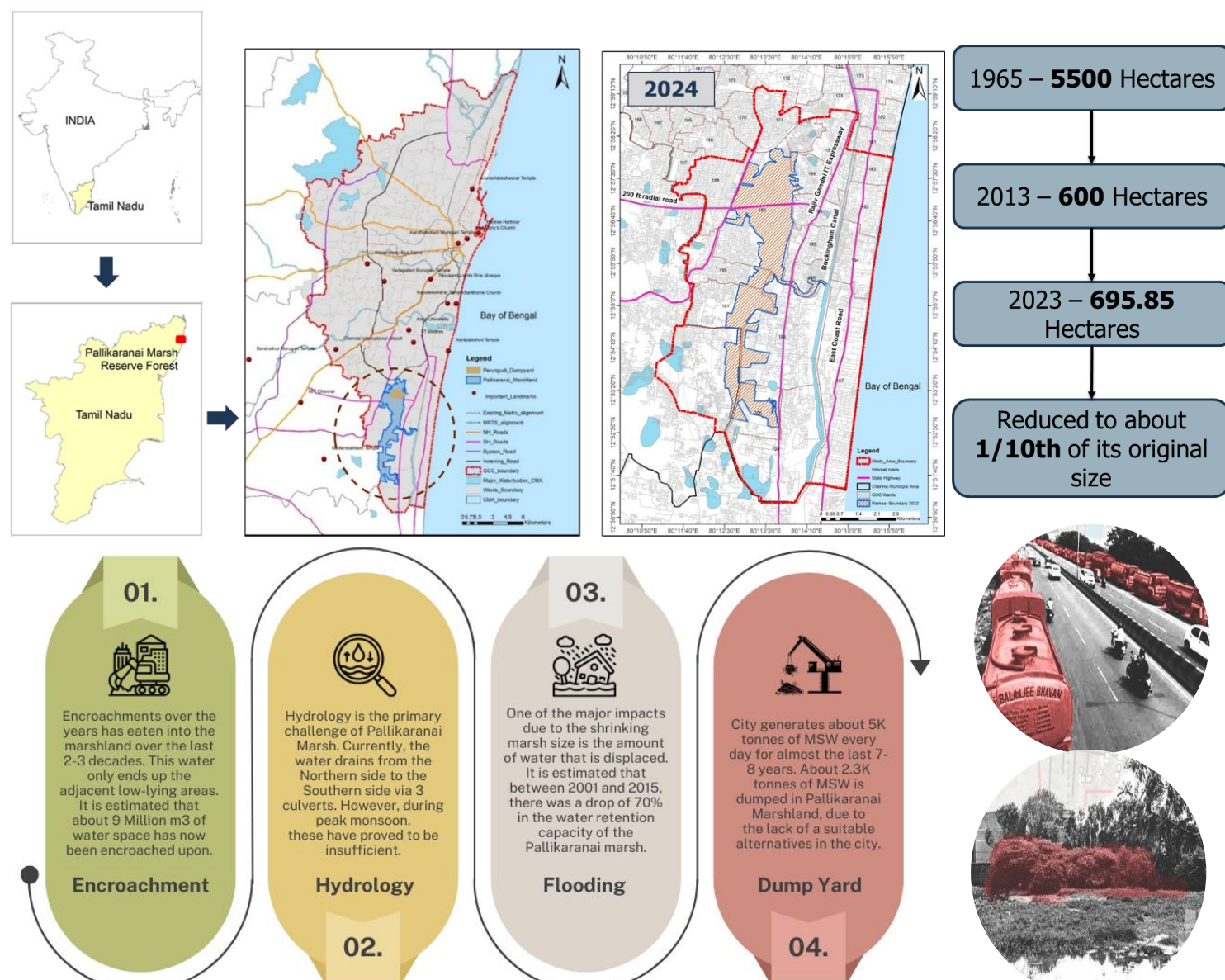


Student Thesis Competition (STC) Season 5 on “Re-imagining Urban Rivers”

Restoration And Capture Of Ecological Values Of An Urban Marshland - The Case Of Pallikaranai Marshland, Chennai

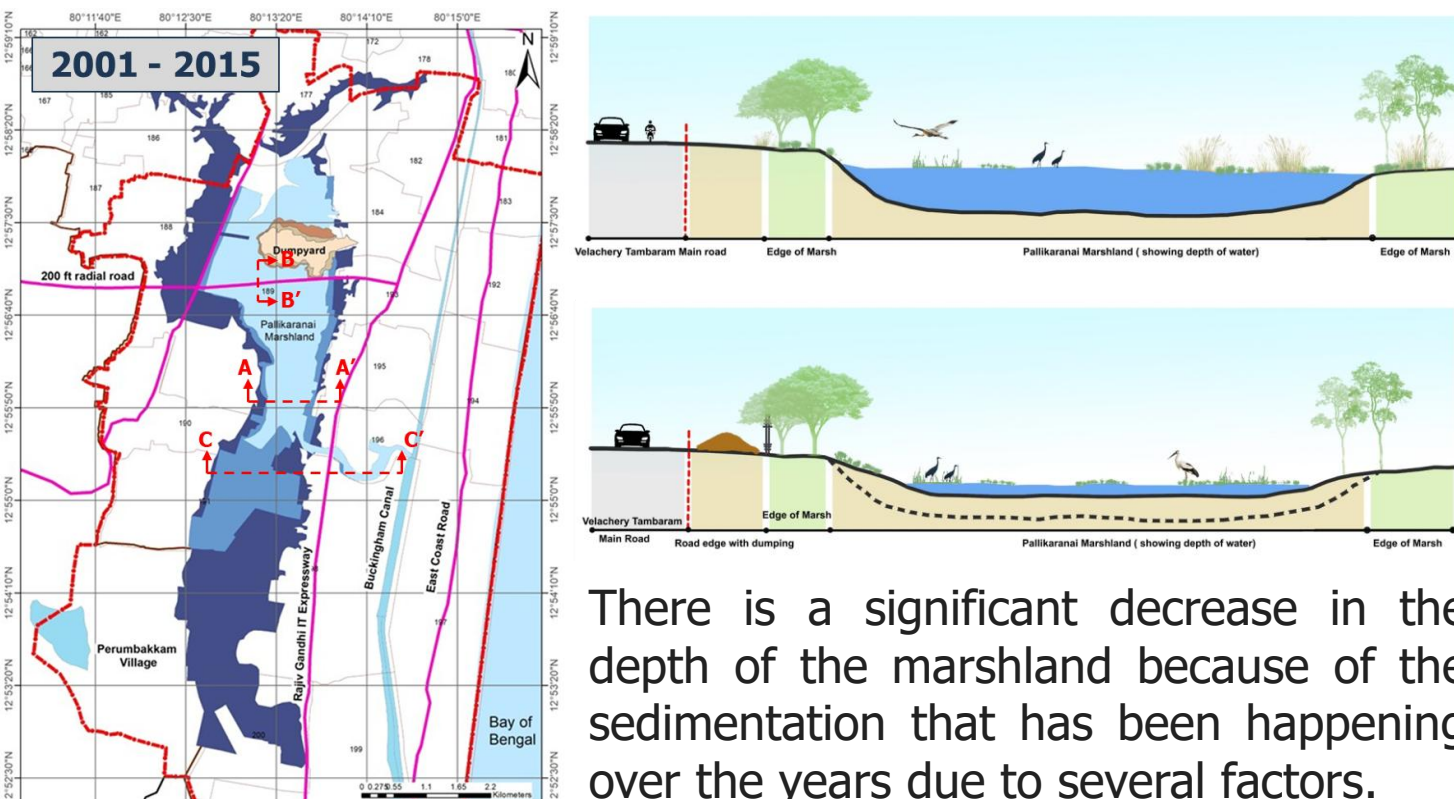
Student Name: Ragapriya K
Course Discipline: M Plan
(Environmental Planning and Management)

INTRODUCTION



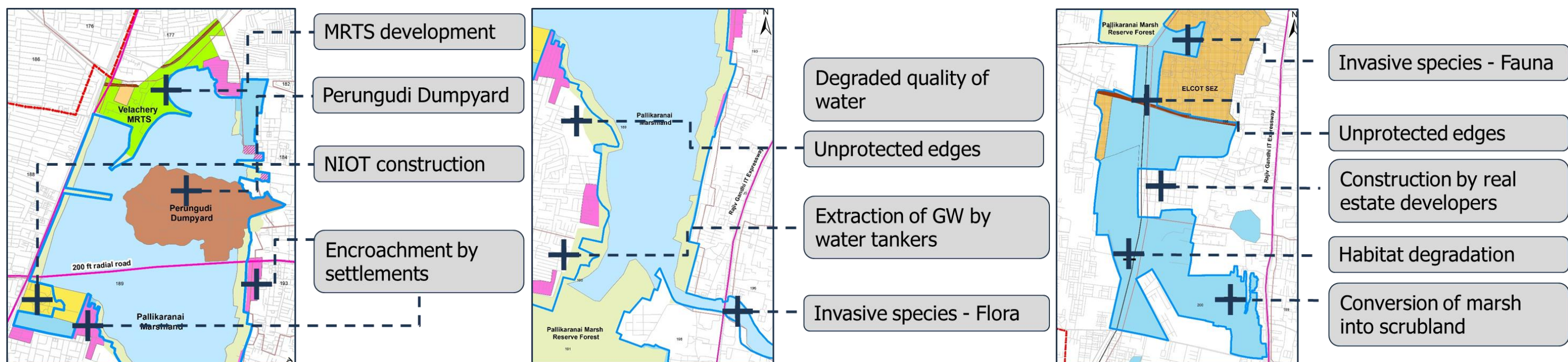
The Pallikaranai marshland has been experiencing severe degradation over the past few decades due to various anthropogenic activities.

ANALYSIS

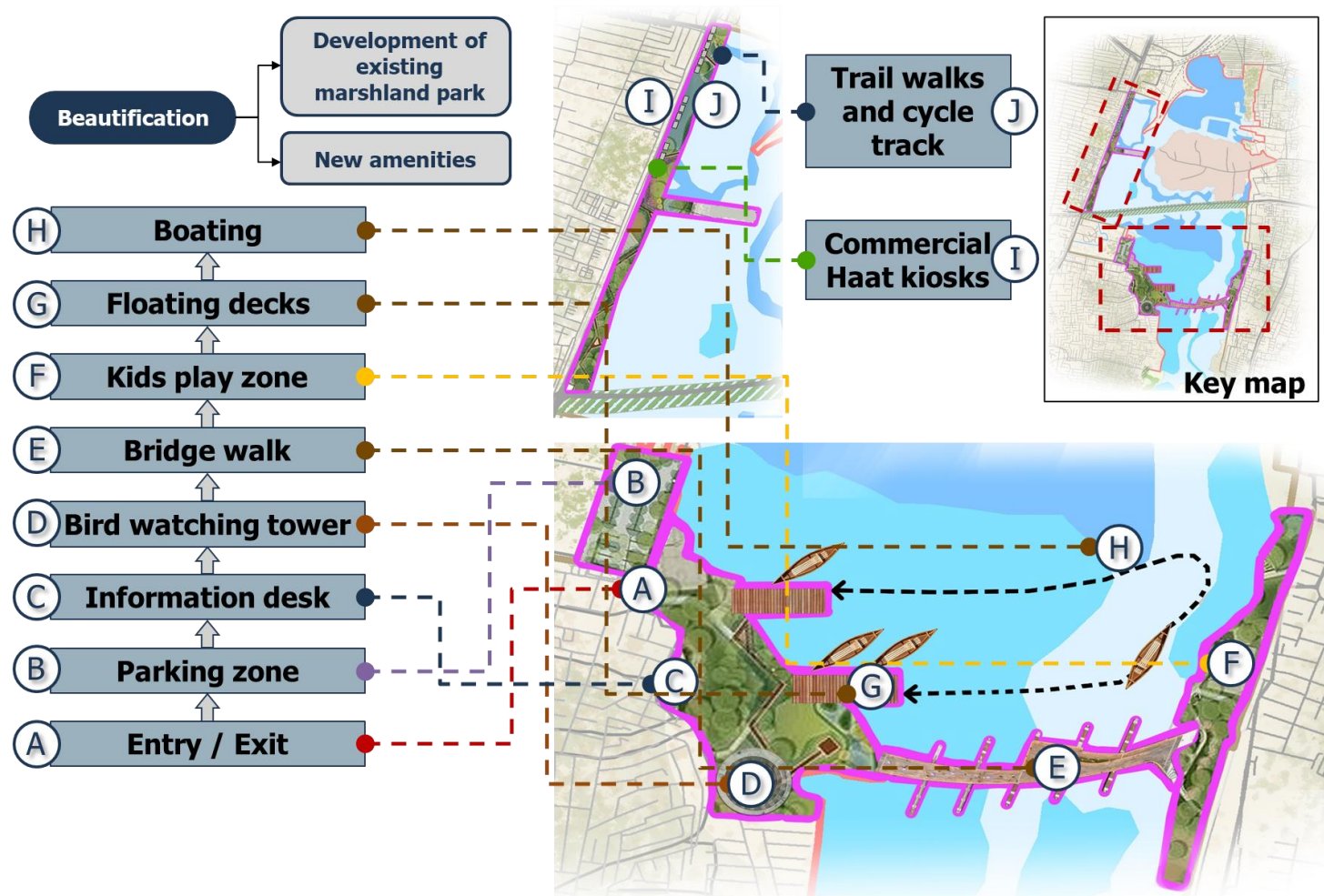


Area Change Matrix						
Class name	2008 (Sq.km)	2024 (Sq.km)	Change in area (Sq.km)	2008 %	2024 %	Area change %
Water Body	15.16	6.45	-8.71	18.209	7.743	-10.466
Vegetation	29.59	12.73	-16.87	35.543	15.282	-20.260
Builtup	25.68	38.48	12.79	30.845	46.211	15.365
Barren land	12.82	25.61	12.79	15.401	30.762	15.360

SUMMARY OF KEY ISSUES



PROPOSAL



WAY FORWARD

